

測試報告

Test Report

號碼(No.) : CE/2017/91011

日期(Date) : 2017/09/13

頁數(Page): 1 of 9

中華紙漿股份有限公司

CHUNG HWA PULP CORPORATION

台北市中正區重慶南路二段51號12樓

12F, NO. 51, SEC. 2, CHONGCHING S. RD., JHONGZHENG DISTRICT, TAIPEI CITY 100, TAIWAN, R. O. C.



以下測試樣品係由申請廠商所提供及確認 (The following sample(s) was/were submitted and identified by/on behalf of the applicant as):

送樣廠商(Sample Submitted By) : 中華紙漿股份有限公司 (CHUNG HWA PULP CORPORATION)

樣品名稱(Sample Description) : UNCOATED WOODFREE & RECYCLED PAOER (模造道林再生紙類)

應用於(Used For) : 新荷100, 新荷500, 清荷高白環保道林, 清荷米色環保道林, 清荷高白環保影印紙, 特級特白道林, 白道林, 特白模造, 嵩厚特白道林, 新高級雪面劃刊, 高級劃刊, 全木道林, 特級米色塗佈道林, 高級圖書紙, 嵩厚劃刊, 特級象牙道林, 黃彩離型用紙, 米色漫畫用紙, 離型白牛皮紙, 雪白劃刊, 環保白牛皮紙, 上質白道林, 繪圖紙, 塗佈手提袋用紙, 白牛皮紙, 摩爾白道林, 白道林紙, 高級道林紙, 米色道林紙, 米黃道林紙, 淺米黃道林紙, 清白道林紙, 珍白道林紙, 乳白道林紙, 電腦紙, 清白電腦紙, 雷射電腦紙, 離型原紙, 雷射離型紙, 特級雪白道林紙, 特級乳白道林紙, 高級劃刊紙, 特級象牙道林紙, 鬆厚道林紙, 鬆厚微塗紙, 影印紙, 再生影印紙, 全木道林紙, 非碳複寫原紙, 高速封裝用紙, 信封紙, 水晶噴墨紙, 噴墨離型紙, 優質雪白道林, 新象牙道林。 (NEO LOTUS 100 RECYCLED PAPER, NEO LOTUS 500 RECYCLED PAPER, CLEAR LOTUS HI-BRIGHT RECYCLED PAPER, CLEAR LOTUS CREAMY RECYCLED PAPER, SUPERIOR UNCOATED WOODFREE, WHITE UNCOATED WOODFREE, HI-WHITE UNCOATED WOODFREE, BULKY SNOW WHITE UNCOATED WOODFREE, BIT-COATED WOODFREE, SHOW WHITE UNCOATED WOODFREE, SUPERIOR BIT-COATED WOODFREE, CREAMY UNCOATED WOODFREE, HIGH BULKY BOOK PAPER, BULKY BIT-COATED WOODFREE, SUPERIOR IVORY UNCOATED WOODFREE, SUPERIOR UNCOATED WOODFREE, YELLOW KRAFT PAPER, CREAMY HIGH BULKY PRINTING&WRITING PAPER, COPY PAPER, HIGH BULKY BIT-COATED WOODFREE, RECYCLED KRAFT PAPER, EXCELLENT WHITE UNCOATED WOODFREE, DRAWING PAPER, WOODFREE FINE PAPER, IVORY WOODFREE FINE PAPER, CREAM WOODFREE FINE PAPER, BLUISH WHITE WOODFREE FINE PAPER, COPY PAPER, SUPERIOR SNOW-WHITE COATED PAPER, SUPERIOR IVORY COATED PAPER, COMPUTER FORM PAPER)

收件日期(Sample Receiving Date) : 2017/09/06

測試期間(Testing Period) : 2017/09/06 TO 2017/09/13

測試結果(Test Results)

請參閱下一頁 (Please refer to following pages).

Troy Chang, Manager - Tech
Signed for and on behalf of
SGS TAIWAN LTD.
Chemical Laboratory - Taipei



This document is issued by the Company subject to its General Conditions of Service printed overleaf, available on request or accessible at <http://www.sgs.com/en/Terms-and-Conditions.aspx> and, for electronic format documents, subject to Terms and Conditions for Electronic Documents at <http://www.sgs.com/en/Terms-and-Conditions/Termse-Documents.aspx>. Attention is drawn to the limitation of liability, indemnification and jurisdiction issues defined therein. Any holder of this document is advised that information contained hereon reflects the Company's findings at the time of its intervention only and within the limits of client's instruction, if any. The Company's sole responsibility is to its Client and this document does not exonerate parties to a transaction from exercising all their rights and obligations under the transaction documents. This document cannot be reproduced, except in full, without prior written approval of the Company. Any unauthorized alteration, forgery or falsification of the content or appearance of this document is unlawful and offenders may be prosecuted to the fullest extent of the law. Unless otherwise stated the results shown in this test report refer only to the sample(s) tested.

測試報告

Test Report

號碼(No.) : CE/2017/91011

日期(Date) : 2017/09/13

頁數(Page): 2 of 9

中華紙漿股份有限公司



CHUNG HWA PULP CORPORATION

台北市中正區重慶南路二段51號12樓

12F, NO. 51, SEC. 2, CHONGCHING S. RD., JHONGZHENG DISTRICT, TAIPEI CITY 100, TAIWAN, R. O. C.

測試結果(Test Results)

測試部位(PART NAME)No. 1 : 白色紙張 (WHITE PAPER)

測試項目 (Test Items)	單位 (Unit)	測試方法 (Method)	方法偵測 極限值 (MDL)	結果 (Result)
				No. 1
鎘 / Cadmium (Cd)	mg/kg	參考 IEC 62321-5 (2013), 以感應耦合電漿原子發射光譜儀檢測. / With reference to IEC 62321-5 (2013) and performed by ICP-AES.	2	n. d.
鉛 / Lead (Pb)	mg/kg	參考 IEC 62321-5 (2013), 以感應耦合電漿原子發射光譜儀檢測. / With reference to IEC 62321-5 (2013) and performed by ICP-AES.	2	n. d.
汞 / Mercury (Hg)	mg/kg	參考 IEC 62321-4 (2013), 以感應耦合電漿原子發射光譜儀檢測. / With reference to IEC 62321-4 (2013) and performed by ICP-AES.	2	n. d.
六價鉻 / Hexavalent Chromium Cr(VI) (◆)	mg/kg	參考 IEC 62321-7-2 (2017), 以 UV-VIS 檢測; 參考 IEC 62321-5 (2013), 以 ICP-AES 檢測. / With reference to IEC 62321-7-2 (2017) and performed by UV-VIS. ; With reference to IEC 62321-5 (2013) and performed by ICP-AES.	8	n. d.
六溴環十二烷及所有主要被辨別出的異構物 / Hexabromocyclododecane (HBCDD) and all major diastereoisomers identified (α -HBCDD, β -HBCDD, γ -HBCDD) (CAS No.: 25637-99-4 and 3194-55-6 (134237- 51-7, 134237-50-6, 134237-52-8))	mg/kg	參考 IEC 62321 (2008), 以氣相層析/ 質譜儀檢測. / With reference to IEC 62321 (2008). Analysis was performed by GC/MS.	5	n. d.

This document is issued by the Company subject to its General Conditions of Service printed overleaf, available on request or accessible at <http://www.sgs.com/en/Terms-and-Conditions.aspx> and, for electronic format documents, subject to Terms and Conditions for Electronic Documents at <http://www.sgs.com/en/Terms-and-Conditions/Termse-Documents.aspx>. Attention is drawn to the limitation of liability, indemnification and jurisdiction issues defined therein. Any holder of this document is advised that information contained hereon reflects the Company's findings at the time of its intervention only and within the limits of client's instruction, if any. The Company's sole responsibility is to its Client and this document does not exonerate parties to a transaction from exercising all their rights and obligations under the transaction documents. This document cannot be reproduced, except in full, without prior written approval of the Company. Any unauthorized alteration, forgery or falsification of the content or appearance of this document is unlawful and offenders may be prosecuted to the fullest extent of the law. Unless otherwise stated the results shown in this test report refer only to the sample(s) tested.

測試報告

號碼(No.) : CE/2017/91011

日期(Date) : 2017/09/13

頁數(Page): 3 of 9

Test Report

中華紙漿股份有限公司

CHUNG HWA PULP CORPORATION

台北市中正區重慶南路二段51號12樓

12F, NO. 51, SEC. 2, CHONGCHING S. RD., JHONGZHENG DISTRICT, TAIPEI CITY 100, TAIWAN, R. O. C.



測試項目 (Test Items)	單位 (Unit)	測試方法 (Method)	方法偵測 極限值 (MDL)	結果 (Result)
				No. 1
多溴聯苯總和 / Sum of PBBs	mg/kg	參考IEC 62321-6 (2015), 以氣相層析 / 質譜儀檢測. / With reference to IEC 62321-6 (2015) and performed by GC/MS.	-	n. d.
一溴聯苯 / Monobromobiphenyl	mg/kg		5	n. d.
二溴聯苯 / Dibromobiphenyl	mg/kg		5	n. d.
三溴聯苯 / Tribromobiphenyl	mg/kg		5	n. d.
四溴聯苯 / Tetrabromobiphenyl	mg/kg		5	n. d.
五溴聯苯 / Pentabromobiphenyl	mg/kg		5	n. d.
六溴聯苯 / Hexabromobiphenyl	mg/kg		5	n. d.
七溴聯苯 / Heptabromobiphenyl	mg/kg		5	n. d.
八溴聯苯 / Octabromobiphenyl	mg/kg		5	n. d.
九溴聯苯 / Nonabromobiphenyl	mg/kg		5	n. d.
十溴聯苯 / Decabromobiphenyl	mg/kg		5	n. d.
多溴聯苯醚總和 / Sum of PBDEs	mg/kg		-	n. d.
一溴聯苯醚 / Monobromodiphenyl ether	mg/kg		5	n. d.
二溴聯苯醚 / Dibromodiphenyl ether	mg/kg		5	n. d.
三溴聯苯醚 / Tribromodiphenyl ether	mg/kg		5	n. d.
四溴聯苯醚 / Tetrabromodiphenyl ether	mg/kg		5	n. d.
五溴聯苯醚 / Pentabromodiphenyl ether	mg/kg		5	n. d.
六溴聯苯醚 / Hexabromodiphenyl ether	mg/kg		5	n. d.
七溴聯苯醚 / Heptabromodiphenyl ether	mg/kg		5	n. d.
八溴聯苯醚 / Octabromodiphenyl ether	mg/kg		5	n. d.
九溴聯苯醚 / Nonabromodiphenyl ether	mg/kg		5	n. d.
十溴聯苯醚 / Decabromodiphenyl ether	mg/kg		5	n. d.

This document is issued by the Company subject to its General Conditions of Service printed overleaf, available on request or accessible at <http://www.sgs.com/en/Terms-and-Conditions.aspx> and, for electronic format documents, subject to Terms and Conditions for Electronic Documents at <http://www.sgs.com/en/Terms-and-Conditions/Termse-Documents.aspx>. Attention is drawn to the limitation of liability, indemnification and jurisdiction issues defined therein. Any holder of this document is advised that information contained hereon reflects the Company's findings at the time of its intervention only and within the limits of client's instruction, if any. The Company's sole responsibility is to its Client and this document does not exonerate parties to a transaction from exercising all their rights and obligations under the transaction documents. This document cannot be reproduced, except in full, without prior written approval of the Company. Any unauthorized alteration, forgery or falsification of the content or appearance of this document is unlawful and offenders may be prosecuted to the fullest extent of the law. Unless otherwise stated the results shown in this test report refer only to the sample(s) tested.

測試報告

號碼(No.) : CE/2017/91011

日期(Date) : 2017/09/13

頁數(Page): 4 of 9

Test Report

中華紙漿股份有限公司

CHUNG HWA PULP CORPORATION

台北市中正區重慶南路二段51號12樓

12F, NO. 51, SEC. 2, CHONGCING S. RD., JHONGZHENG DISTRICT, TAIPEI CITY 100, TAIWAN, R. O. C.



測試項目 (Test Items)	單位 (Unit)	測試方法 (Method)	方法偵測 極限值 (MDL)	結果 (Result)
				No. 1
鄰苯二甲酸丁苯甲酯 / BBP (Butyl Benzyl phthalate) (CAS No. : 85-68-7)	mg/kg	參考IEC 62321-8 (2017), 以氣相層析儀/質譜儀檢測. / With reference to IEC 62321-8 (2017). Analysis was performed by GC/MS.	50	n. d.
鄰苯二甲酸二丁酯 / DBP (Dibutyl phthalate) (CAS No. : 84-74-2)	mg/kg		50	n. d.
鄰苯二甲酸二(2-乙基己基)酯 / DEHP (Di- (2-ethylhexyl) phthalate) (CAS No. : 117-81-7)	mg/kg		50	n. d.
鄰苯二甲酸二異丁酯 / DIBP (Di-isobutyl phthalate) (CAS No. : 84-69-5)	mg/kg		50	n. d.
鄰苯二甲酸二異癸酯 / DIDP (Di-isodecyl phthalate) (CAS No. : 26761-40-0; 68515-49-1)	mg/kg		50	n. d.
鄰苯二甲酸二異壬酯 / DINP (Di-isononyl phthalate) (CAS No. : 28553-12-0; 68515-48-0)	mg/kg		50	n. d.
鄰苯二甲酸二正辛酯 / DNOP (Di-n-octyl phthalate) (CAS No. : 117-84-0)	mg/kg		50	n. d.

備註(Note) :

1. mg/kg = ppm ; 0.1wt% = 1000ppm
2. n. d. = Not Detected (未檢出)
3. MDL = Method Detection Limit (方法偵測極限值)
4. "-" = Not Regulated (無規格值)
5. (◆) :

若鉻含量小於六價鉻之方法偵測極限值, 則六價鉻為n. d. , 不須再測試六價鉻。

The result of Cr(VI) is "n.d." as the result of Chromium (Cr) is less than the MDL of Cr(VI), and confirmation test of Cr(VI) is not required.

若鉻含量未小於六價鉻之方法偵測極限值, 需進行六價鉻測試。

If the Chromium (Cr) content is not less than the MDL of Cr(VI), confirmation test of Cr(VI) is required.

測試報告

Test Report

號碼(No.) : CE/2017/91011

日期(Date) : 2017/09/13

頁數(Page): 5 of 9

中華紙漿股份有限公司

CHUNG HWA PULP CORPORATION

台北市中正區重慶南路二段51號12樓

12F, NO. 51, SEC. 2, CHONGCING S. RD., JHONGZHENG DISTRICT, TAIPEI CITY 100, TAIWAN, R. O. C.

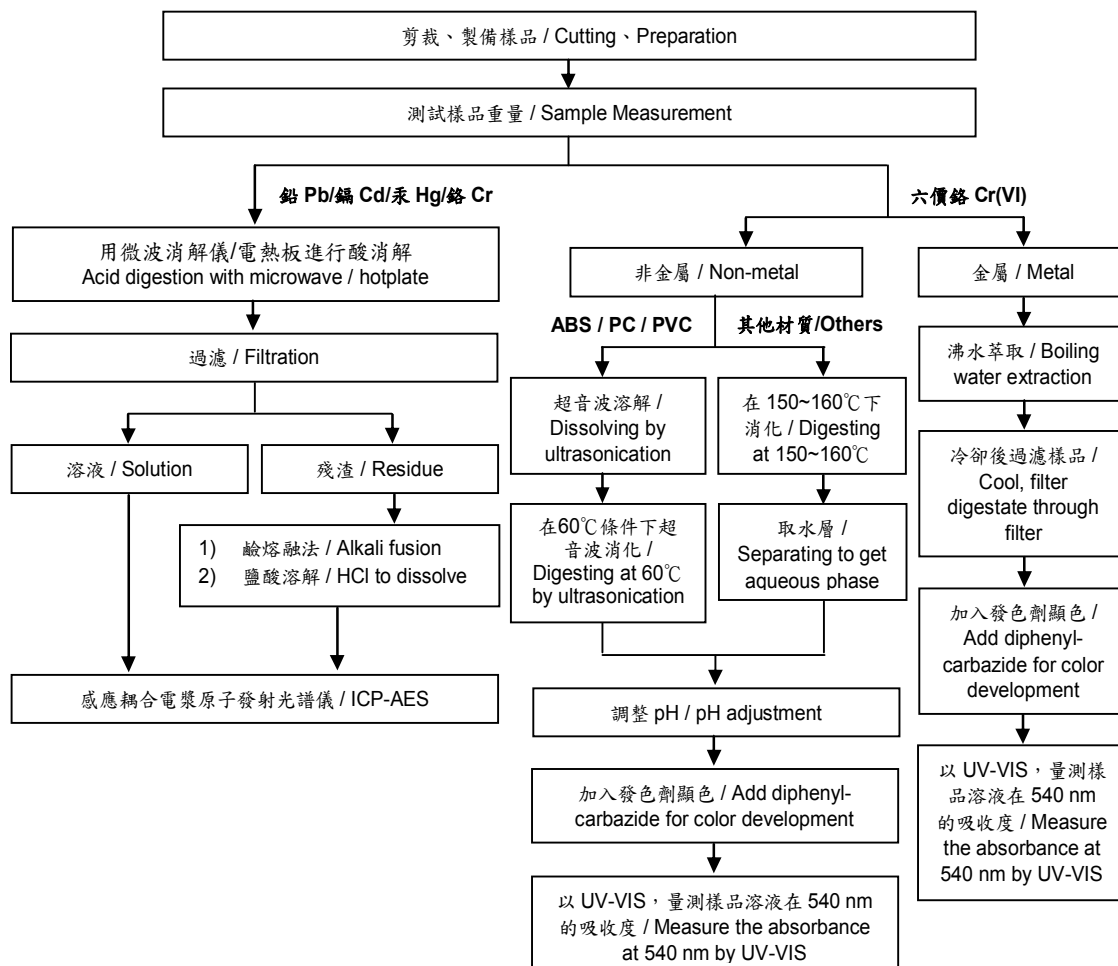


重金屬流程圖 / Analytical flow chart of Heavy Metal

根據以下的流程圖之條件，樣品已完全溶解。(六價鉻測試方法除外)

These samples were dissolved totally by pre-conditioning method according to below flow chart. (Cr⁶⁺ test method excluded)

- 測試人員：王志瑋 / Technician: JR Wang
- 測試負責人：張啟興 / Supervisor: Troy Chang



測試報告

Test Report

號碼(No.) : CE/2017/91011

日期(Date) : 2017/09/13

頁數(Page): 6 of 9

中華紙漿股份有限公司

CHUNG HWA PULP CORPORATION

台北市中正區重慶南路二段51號12樓

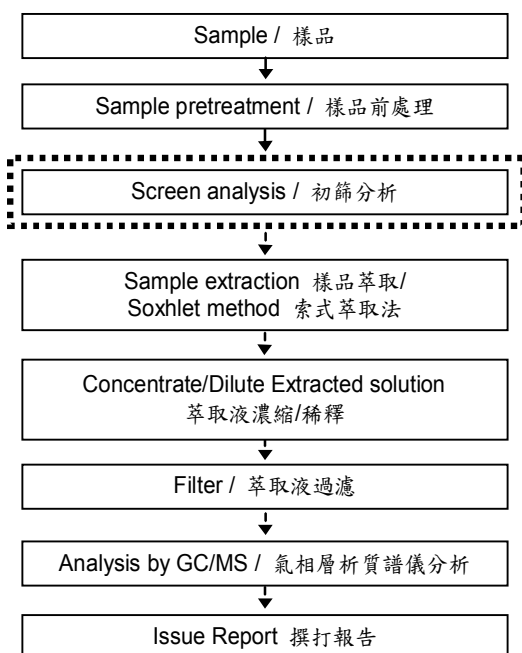
12F, NO. 51, SEC. 2, CHONGCHING S. RD., JHONGZHENG DISTRICT, TAIPEI CITY 100, TAIWAN, R. O. C.



多溴聯苯/多溴聯苯醚分析流程圖 / Analytical flow chart - PBB/PBDE

- 測試人員：涂雅琴 / Technician: Yaling Tu
- 測試負責人：張啟興 / Supervisor: Troy Chang

初次測試程序 / First testing process —————→
 選擇性篩檢程序 / Optional screen process
 確認程序 / Confirmation process - - - ->



This document is issued by the Company subject to its General Conditions of Service printed overleaf, available on request or accessible at <http://www.sgs.com/en/Terms-and-Conditions.aspx> and, for electronic format documents, subject to Terms and Conditions for Electronic Documents at <http://www.sgs.com/en/Terms-and-Conditions/Termse-Document.aspx>. Attention is drawn to the limitation of liability, indemnification and jurisdiction issues defined therein. Any holder of this document is advised that information contained hereon reflects the Company's findings at the time of its intervention only and within the limits of client's instruction, if any. The Company's sole responsibility is to its Client and this document does not exonerate parties to a transaction from exercising all their rights and obligations under the transaction documents. This document cannot be reproduced, except in full, without prior written approval of the Company. Any unauthorized alteration, forgery or falsification of the content or appearance of this document is unlawful and offenders may be prosecuted to the fullest extent of the law. Unless otherwise stated the results shown in this test report refer only to the sample(s) tested.

測試報告

Test Report

號碼(No.) : CE/2017/91011

日期(Date) : 2017/09/13

頁數(Page): 7 of 9

中華紙漿股份有限公司

CHUNG HWA PULP CORPORATION

台北市中正區重慶南路二段51號12樓

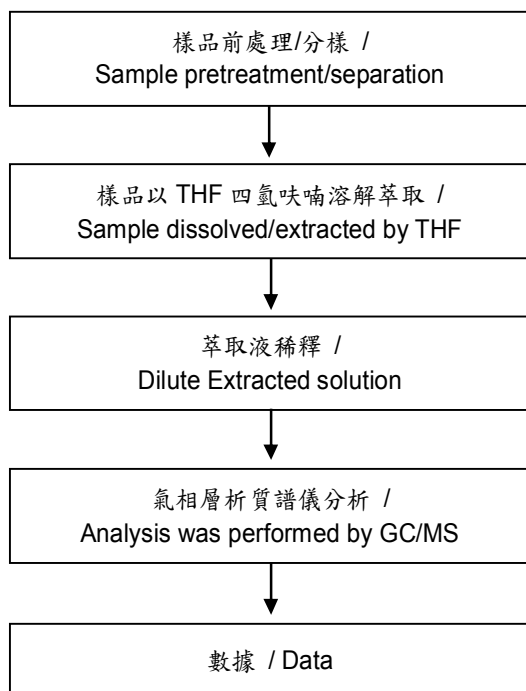
12F, NO. 51, SEC. 2, CHONGCHING S. RD., JHONGZHENG DISTRICT, TAIPEI CITY 100, TAIWAN, R. O. C.



可塑劑分析流程圖 / Analytical flow chart - Phthalate

- 測試人員：徐毓明 / Technician: Andy Shu
- 測試負責人：張啟興 / Supervisor: Troy Chang

【測試方法/Test method: IEC 62321-8】



This document is issued by the Company subject to its General Conditions of Service printed overleaf, available on request or accessible at <http://www.sgs.com/en/Terms-and-Conditions.aspx> and, for electronic format documents, subject to Terms and Conditions for Electronic Documents at <http://www.sgs.com/en/Terms-and-Conditions/Termse-Documents.aspx>. Attention is drawn to the limitation of liability, indemnification and jurisdiction issues defined therein. Any holder of this document is advised that information contained hereon reflects the Company's findings at the time of its intervention only and within the limits of client's instruction, if any. The Company's sole responsibility is to its Client and this document does not exonerate parties to a transaction from exercising all their rights and obligations under the transaction documents. This document cannot be reproduced, except in full, without prior written approval of the Company. Any unauthorized alteration, forgery or falsification of the content or appearance of this document is unlawful and offenders may be prosecuted to the fullest extent of the law. Unless otherwise stated the results shown in this test report refer only to the sample(s) tested.

測試報告

Test Report

號碼(No.) : CE/2017/91011

日期(Date) : 2017/09/13

頁數(Page): 8 of 9

中華紙漿股份有限公司

CHUNG HWA PULP CORPORATION

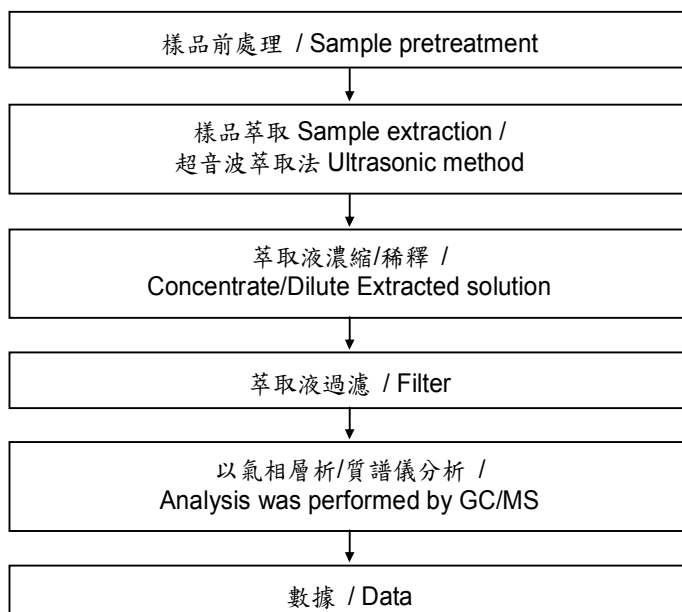
台北市中正區重慶南路二段51號12樓

12F, NO. 51, SEC. 2, CHONGCHING S. RD., JHONGZHENG DISTRICT, TAIPEI CITY 100, TAIWAN, R. O. C.



六溴環十二烷分析流程圖 / Analytical flow chart - HBCDD

- 測試人員：涂雅苓 / Technician: Yaling Tu
- 測試負責人：張啟興 / Supervisor: Troy Chang



This document is issued by the Company subject to its General Conditions of Service printed overleaf, available on request or accessible at <http://www.sgs.com/en/Terms-and-Conditions.aspx> and, for electronic format documents, subject to Terms and Conditions for Electronic Documents at <http://www.sgs.com/en/Terms-and-Conditions/Termse-Document.aspx>. Attention is drawn to the limitation of liability, indemnification and jurisdiction issues defined therein. Any holder of this document is advised that information contained hereon reflects the Company's findings at the time of its intervention only and within the limits of client's instruction, if any. The Company's sole responsibility is to its Client and this document does not exonerate parties to a transaction from exercising all their rights and obligations under the transaction documents. This document cannot be reproduced, except in full, without prior written approval of the Company. Any unauthorized alteration, forgery or falsification of the content or appearance of this document is unlawful and offenders may be prosecuted to the fullest extent of the law. Unless otherwise stated the results shown in this test report refer only to the sample(s) tested.

測試報告

Test Report

號碼(No.) : CE/2017/91011

日期(Date) : 2017/09/13

頁數(Page): 9 of 9

中華紙漿股份有限公司

CHUNG HWA PULP CORPORATION

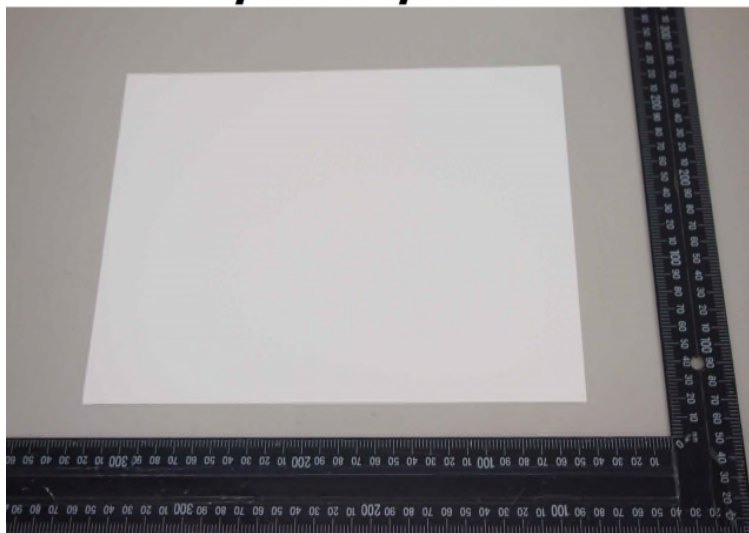
台北市中正區重慶南路二段51號12樓

12F, NO. 51, SEC. 2, CHONGCHING S. RD., JHONGZHENG DISTRICT, TAIPEI CITY 100, TAIWAN, R. O. C.



* 照片中如有箭頭標示，則表示為實際檢測之樣品/部位。 *
(The tested sample / part is marked by an arrow if it's shown on the photo.)

CE/2017/91011



** 報告結尾 (End of Report) **

This document is issued by the Company subject to its General Conditions of Service printed overleaf, available on request or accessible at <http://www.sgs.com/en/Terms-and-Conditions.aspx> and, for electronic format documents, subject to Terms and Conditions for Electronic Documents at <http://www.sgs.com/en/Terms-and-Conditions/Termse-Documents.aspx>. Attention is drawn to the limitation of liability, indemnification and jurisdiction issues defined therein. Any holder of this document is advised that information contained hereon reflects the Company's findings at the time of its intervention only and within the limits of client's instruction, if any. The Company's sole responsibility is to its Client and this document does not exonerate parties to a transaction from exercising all their rights and obligations under the transaction documents. This document cannot be reproduced, except in full, without prior written approval of the Company. Any unauthorized alteration, forgery or falsification of the content or appearance of this document is unlawful and offenders may be prosecuted to the fullest extent of the law. Unless otherwise stated the results shown in this test report refer only to the sample(s) tested.