

## 測試報告

## Test Report

號碼(No.): ETR21404531

日期(Date): 27-Apr-2021

頁數(Page): 1 of 5

中華紙漿股份有限公司 (CHUNG HWA PULP CORPORATION)

台北市中正區重慶南路二段51號12樓 (12F., NO. 51, SEC. 2, CHUNGCHING S. RD., ZHONGZHENG DISTRICT, TAIPEI CITY 100, TAIWAN, R. O. C.)

以下測試樣品係由申請廠商所提供及確認 (The following sample(s) was/were submitted and identified by/on behalf of the applicant as) :

送樣廠商(Sample Submitted By) : 中華紙漿股份有限公司 (CHUNG HWA PULP CORPORATION)

樣品名稱(Sample Name) : CCK ( CLAY COATED KRAFT PAPER )

收件日(Sample Receiving Date) : 20-Apr-2021

測試期間(Testing Period) : 20-Apr-2021 to 27-Apr-2021

測試需求(Test Requested) : 依據客戶要求，參考美國毒管法(TSCA) 第 6(h) 章節，進行5項持久性生物累積毒性物質 (PBTs) 測試，測試項目請參閱測試結果表格。(As specified by client, the sample(s) was/were tested for 5 PBTs with reference to Regulation of Persistent, Bioaccumulative, Toxic (PBT) Chemicals under Toxic Substances Control Act (TSCA) Section 6(h). Please refer to result table for testing item(s).)

測試結果(Test Results) : 請參閱下一頁 (Please refer to following pages.)

  
Troy Chang, Manager, Technical  
Signed for and on behalf of  
SGS TAIWAN LTD.  
Chemical Laboratory - Taipei



PIN CODE: 7C3005BE

This document is issued by the Company subject to its General Conditions of Service printed overleaf, available on request or accessible at <https://www.sgs.com.tw/terms-of-service> and, for electronic format documents, subject to Terms and Conditions for Electronic Documents at <https://www.sgs.com.tw/terms-of-service>. Attention is drawn to the limitation of liability, indemnification and jurisdiction issues defined therein. Any holder of this document is advised that information contained hereon reflects the Company's findings at the time of its intervention only and within the limits of client's instruction, if any. The Company's sole responsibility is to its Client and this document does not exonerate parties to a transaction from exercising all their rights and obligations under the transaction documents. This document cannot be reproduced, except in full, without prior written approval of the Company. Any unauthorized alteration, forgery or falsification of the content or appearance of this document is unlawful and offenders may be prosecuted to the fullest extent of the law. Unless otherwise stated the results shown in this test report refer only to the sample(s) tested.

# 測試報告

## Test Report

號碼(No.): ETR21404531

日期(Date): 27-Apr-2021

頁數(Page): 2 of 5

中華紙漿股份有限公司 (CHUNG HWA PULP CORPORATION)

台北市中正區重慶南路二段51號12樓 (12F., NO. 51, SEC. 2, CHUNGCHING S. RD., ZHONGZHENG DISTRICT, TAIPEI CITY 100, TAIWAN, R. O. C.)

### 測試部位敘述 (Test Part Description)

No.1 : 白色紙 (WHITE PAPER)

### 測試結果 (Test Results)

測試項目 (Test Items)	測試方法 (Method)	單位 (Unit)	MDL	結果 (Result)	限值 (Limit)
				No.1	
十溴聯苯醚 (DecaBDE) (Decabromodiphenyl ether (DecaBDE)) (CAS No.: 1163-19-5)	參考US EPA 3550C: 2007 · 以氣相層析儀/質譜儀分析。(With reference to US EPA 3550C: 2007, analysis was performed by GC/MS.)	mg/kg	5	n.d.	Prohibited / N/A(*3)
異丙基化磷酸三苯酯 (PIP 3:1) (Phenol, isopropylated, phosphate (3:1) (PIP 3:1)) (CAS No.: 68937-41-7)	參考US EPA 3550C: 2007 · 以氣相層析儀/質譜儀分析。(With reference to US EPA 3550C: 2007, analysis was performed by GC/MS.)	mg/kg	5	n.d.	Prohibited / N/A(*1)
2,4,6-三叔丁基酚 (2,4,6-TTBP) (2,4,6-Tris(tert-butyl)phenol (2,4,6-TTBP)) (CAS No.: 732-26-3)	參考US EPA 3550C: 2007 · 以氣相層析儀/質譜儀分析。(With reference to US EPA 3550C: 2007, analysis was performed by GC/MS.)	mg/kg	5	n.d.	3000 / N/A(*2)
五氯苯硫酚 (PCTP) (Pentachlorothiophenol (PCTP)) (CAS No.: 133-49-3)	參考US EPA 3550C: 2007 · 以氣相層析儀/質譜儀分析。(With reference to US EPA 3550C: 2007, analysis was performed by GC/MS.)	mg/kg	5	n.d.	10000
六氯丁二烯 (HCBd) (Hexachlorobutadiene (HCBd)) (CAS No.: 87-68-3)	參考US EPA 3550C: 2007 · 以氣相層析儀/質譜儀分析。(With reference to US EPA 3550C: 2007, analysis was performed by GC/MS.)	mg/kg	5	n.d.	Prohibited

This document is issued by the Company subject to its General Conditions of Service printed overleaf, available on request or accessible at <https://www.sgs.com.tw/terms-of-service> and, for electronic format documents, subject to Terms and Conditions for Electronic Documents at <https://www.sgs.com.tw/terms-of-service>. Attention is drawn to the limitation of liability, indemnification and jurisdiction issues defined therein. Any holder of this document is advised that information contained hereon reflects the Company's findings at the time of its intervention only and within the limits of client's instruction, if any. The Company's sole responsibility is to its Client and this document does not exonerate parties to a transaction from exercising all their rights and obligations under the transaction documents. This document cannot be reproduced, except in full, without prior written approval of the Company. Any unauthorized alteration, forgery or falsification of the content or appearance of this document is unlawful and offenders may be prosecuted to the fullest extent of the law. Unless otherwise stated the results shown in this test report refer only to the sample(s) tested.

## 測試報告

# Test Report

號碼(No.): ETR21404531

日期(Date): 27-Apr-2021

頁數(Page): 3 of 5

中華紙漿股份有限公司 (CHUNG HWA PULP CORPORATION)

台北市中正區重慶南路二段51號12樓 (12F., NO. 51, SEC. 2, CHUNGCHING S. RD., ZHONGZHENG DISTRICT, TAIPEI CITY 100, TAIWAN, R. O. C.)

### 備註(Note) :

1. mg/kg = ppm ; 0.1wt% = 1000ppm
2. MDL = Method Detection Limit (方法偵測極限值)
3. n.d. = Not Detected (未檢出) ; 小於MDL / Less than MDL
4. N/A(\*1) : 若產品/成品為以下 · 則不適用 (The submitted sample is exempted from the regulated scope if it is anyone of the following) :
  - 航空或軍事用液壓油 (Hydraulic fluids for aviation or military)
  - 潤滑劑和油脂 (Lubricants and grease)
  - 汽車和航空航天器的新零件和替換零件 (New and replacement parts for motor and aerospace vehicles)
  - 在封閉系統中製造氰基丙烯酸酯粘合劑 (Manufacture of cyanoacrylate adhesives in closed systems)
  - 火車和船舶應用的專用發動機空氣濾清器 (Specialized engine air filters for locomotive and marine applications)
  - 從含PIP(3:1)的產品或成品中回收的塑料 (Plastic for recycling from PIP (3:1)-containing products or articles)
  - 從包含PIP(3:1)的產品或成品中回收的塑料製成的成品或成品 (Finished products or articles made of plastic recycled from PIP (3:1)-containing products or articles)
5. N/A(\*2) : 若產品為非作為潤滑油中添加劑 · 則不適用。(The submitted sample is exempted from the regulated scope if it is not oil and lubricant additives.)
6. N/A(\*3) : 若產品/成品為以下 · 則不適用 (The submitted sample is exempted from the regulated scope if it is anyone of the following) :

從產品或成品進行加工和分銷含十溴二苯醚回收的塑料或者由這種再生塑料製成的含十溴二苯醚的產品或成品。  
(Exempts processing and distribution for recycling of DecaBDE-containing plastic from products or articles and DecaBDE-containing products or articles made from such recycled plastic.)

This document is issued by the Company subject to its General Conditions of Service printed overleaf, available on request or accessible at <https://www.sgs.com.tw/terms-of-service> and, for electronic format documents, subject to Terms and Conditions for Electronic Documents at <https://www.sgs.com.tw/terms-of-service>. Attention is drawn to the limitation of liability, indemnification and jurisdiction issues defined therein. Any holder of this document is advised that information contained hereon reflects the Company's findings at the time of its intervention only and within the limits of client's instruction, if any. The Company's sole responsibility is to its Client and this document does not exonerate parties to a transaction from exercising all their rights and obligations under the transaction documents. This document cannot be reproduced, except in full, without prior written approval of the Company. Any unauthorized alteration, forgery or falsification of the content or appearance of this document is unlawful and offenders may be prosecuted to the fullest extent of the law. Unless otherwise stated the results shown in this test report refer only to the sample(s) tested.

## 測試報告

## Test Report

號碼(No.): ETR21404531

日期(Date): 27-Apr-2021

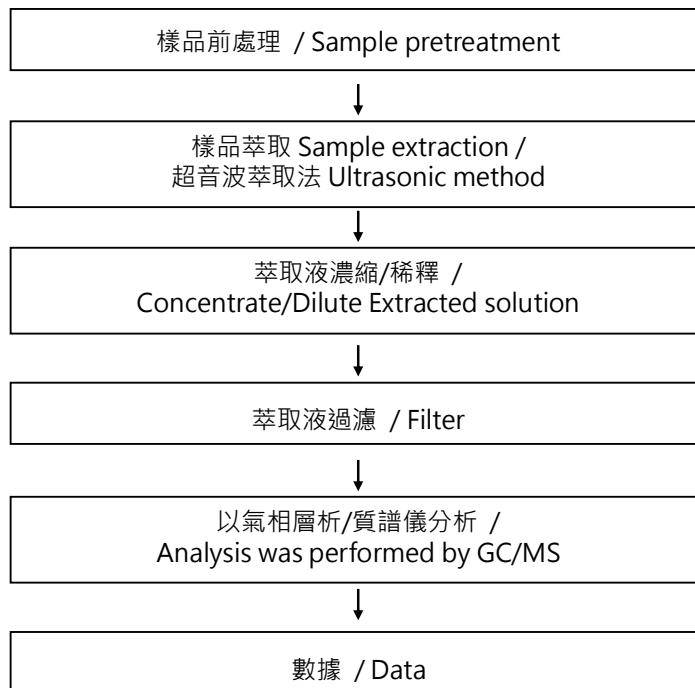
頁數(Page): 4 of 5

中華紙漿股份有限公司 (CHUNG HWA PULP CORPORATION)

台北市中正區重慶南路二段51號12樓 (12F., NO. 51, SEC. 2, CHUNGCHING S. RD., ZHONGZHENG DISTRICT, TAIPEI CITY 100, TAIWAN, R. O. C.)

### 持久性生物累積毒性物質 (PBTs) 分析流程圖 /

### Analytical flow chart - Persistent, Bioaccumulative, Toxic (PBTs)



This document is issued by the Company subject to its General Conditions of Service printed overleaf, available on request or accessible at <https://www.sgs.com.tw/terms-of-service> and, for electronic format documents, subject to Terms and Conditions for Electronic Documents at <https://www.sgs.com.tw/terms-of-service>. Attention is drawn to the limitation of liability, indemnification and jurisdiction issues defined therein. Any holder of this document is advised that information contained hereon reflects the Company's findings at the time of its intervention only and within the limits of client's instruction, if any. The Company's sole responsibility is to its Client and this document does not exonerate parties to a transaction from exercising all their rights and obligations under the transaction documents. This document cannot be reproduced, except in full, without prior written approval of the Company. Any unauthorized alteration, forgery or falsification of the content or appearance of this document is unlawful and offenders may be prosecuted to the fullest extent of the law. Unless otherwise stated the results shown in this test report refer only to the sample(s) tested.

## 測試報告

## Test Report

號碼(No.): ETR21404531

日期(Date): 27-Apr-2021

頁數(Page): 5 of 5

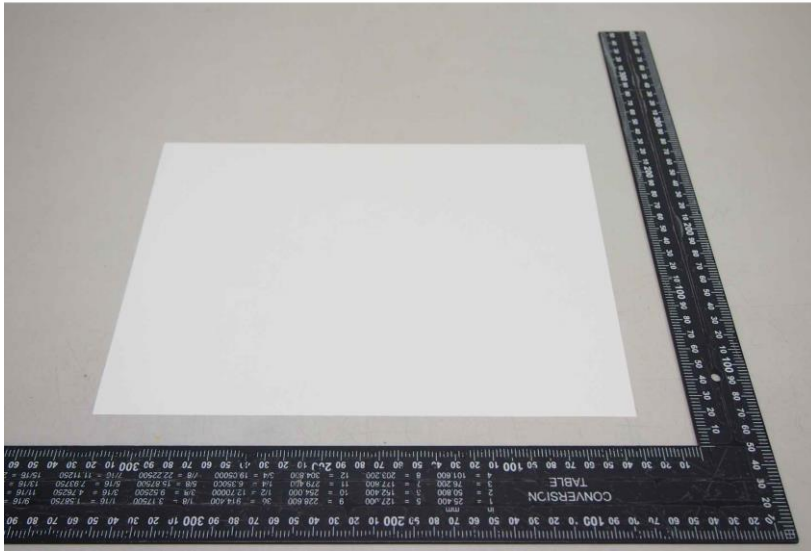
中華紙漿股份有限公司 (CHUNG HWA PULP CORPORATION)

台北市中正區重慶南路二段51號12樓 (12F., NO. 51, SEC. 2, CHUNGCHING S. RD., ZHONGZHENG DISTRICT, TAIPEI CITY 100, TAIWAN, R. O. C.)

\* 照片中如有箭頭標示，則表示為實際檢測之樣品/部位。\*

(The tested sample / part is marked by an arrow if it's shown on the photo.)

### ETR21404531



\*\* 報告結尾 (End of Report) \*\*

This document is issued by the Company subject to its General Conditions of Service printed overleaf, available on request or accessible at <https://www.sgs.com.tw/terms-of-service> and, for electronic format documents, subject to Terms and Conditions for Electronic Documents at <https://www.sgs.com.tw/terms-of-service>. Attention is drawn to the limitation of liability, indemnification and jurisdiction issues defined therein. Any holder of this document is advised that information contained hereon reflects the Company's findings at the time of its intervention only and within the limits of client's instruction, if any. The Company's sole responsibility is to its Client and this document does not exonerate parties to a transaction from exercising all their rights and obligations under the transaction documents. This document cannot be reproduced, except in full, without prior written approval of the Company. Any unauthorized alteration, forgery or falsification of the content or appearance of this document is unlawful and offenders may be prosecuted to the fullest extent of the law. Unless otherwise stated the results shown in this test report refer only to the sample(s) tested.