

測試報告

Test Report

號碼(No.): ETR24404120

日期(Date): 26-Apr-2024

頁數(Page): 1 of 4

中華紙漿股份有限公司 (CHUNG HWA PULP CORPORATION)

台北市中正區重慶南路二段51號12樓 (12F., NO. 51, SEC. 2, CHUNGCHING S. RD., ZHONGZHENG DISTRICT, TAIPEI CITY 100, TAIWAN, R. O. C.)

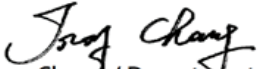
以下測試樣品係由申請廠商所提供及確認 (The following sample(s) was/were submitted and identified by the applicant as) :


送樣廠商(Sample Submitted By) : 中華紙漿股份有限公司 (CHUNG HWA PULP CORPORATION)
樣品名稱(Sample Name) : COATED PAPER (銅版紙類)
應用於(Used For) : 單面銅版紙·特級雙面銅版紙·高級雪面銅版紙·火鶴超級銅版紙·火鶴超級雪面銅版紙·琉麗特級銅版紙·琉麗特級雪面銅版紙·布紋銅版紙·花紋銅版紙·雜誌紙·高白雜誌紙·高白雪面雜誌紙·輕雪面銅版紙·高厚特銅·高厚雪銅·嵩厚雪銅·嵩厚特銅·高階雪面彩噴紙·高階半亮面彩噴紙·高階亮面彩噴紙·睛采映畫紙·文采紙 (ONE-SIDE COATED ART PAPER, TWO-SIDE COATED ART PAPER, ART PAPER(GLOSS), ART PAPER(MATT), FLAMINGO SUPER ART PAPER(GLOSS), FLAMINGO SUPER ART PAPER(MATT), TITTOT ART PAPER(GLOSS), TITTOT ART PAPER(MATT), LINEN EMBOSSED COATED PAPER, PEAR EMBOSSED COATED PAPER, LIGHT WEIGHT COATED PAPER, LIGHT WEIGHT COATED PAPER(GLOSS), LIGHT WEIGHT COATED PAPER(MATT), HIGH BULKY TWO-SIDE COATED ART PAPER(MATT), HIGH BULKY TWO-SIDE COATED ART PAPER(GLOSS))

收件日(Sample Receiving Date) : 19-Apr-2024
測試期間(Testing Period) : 19-Apr-2024 to 26-Apr-2024

測試需求(Test Requested) : 依據客戶指定·測試鹵素-氟、氯、溴、碘。(As specified by client, to test Halogen-Fluorine, Chlorine, Bromine, Iodine in the submitted sample.)

測試結果(Test Results) : 請參閱下一頁 (Please refer to following pages).


Troy Chang / Department Manager
Signed for and on behalf of
SGS TAIWAN LTD.
Chemical Laboratory - Taipei



PIN CODE: E1C4C216

This document is issued by the Company subject to its General Conditions of Service printed overleaf, available on request or accessible at <https://www.sgs.com.tw/terms-of-service> and, for electronic format documents, subject to Terms and Conditions for Electronic Documents at <https://www.sgs.com.tw/terms-of-service>. Attention is drawn to the limitation of liability, indemnification and jurisdiction issues defined therein. Any holder of this document is advised that information contained hereon reflects the Company's findings at the time of its intervention only and within the limits of client's instruction, if any. The Company's sole responsibility is to its Client and this document does not exonerate parties to a transaction from exercising all their rights and obligations under the transaction documents. This document cannot be reproduced, except in full, without prior written approval of the Company. Any unauthorized alteration, forgery or falsification of the content or appearance of this document is unlawful and offenders may be prosecuted to the fullest extent of the law. Unless otherwise stated the results shown in this test report refer only to the sample(s) tested.

測試報告

Test Report

號碼(No.): ETR24404120

日期(Date): 26-Apr-2024

頁數(Page): 2 of 4

中華紙漿股份有限公司 (CHUNG HWA PULP CORPORATION)

台北市中正區重慶南路二段51號12樓 (12F., NO. 51, SEC. 2, CHUNGCHING S. RD., ZHONGZHENG DISTRICT, TAIPEI CITY 100, TAIWAN, R. O. C.)

測試部位敘述 (Test Part Description)

No.1 : 白色紙 (WHITE PAPER)

測試結果 (Test Results)

測試項目 (Test Items)	測試方法 (Method)	單位 (Unit)	MDL	結果 (Result)
				No.1
氟 (F) (Fluorine (F)) (CAS No.: 14762-94-8)	參考BS EN 14582: 2016 · 以離子層析儀分析。 (With reference to BS EN 14582: 2016, analysis was performed by IC.)	mg/kg	50	n.d.
氯 (Cl) (Chlorine (Cl)) (CAS No.: 22537-15-1)	參考BS EN 14582: 2016 · 以離子層析儀分析。 (With reference to BS EN 14582: 2016, analysis was performed by IC.)	mg/kg	50	327
溴 (Br) (Bromine (Br)) (CAS No.: 10097-32-2)	參考BS EN 14582: 2016 · 以離子層析儀分析。 (With reference to BS EN 14582: 2016, analysis was performed by IC.)	mg/kg	50	n.d.
碘 (I) (Iodine (I)) (CAS No.: 14362-44-8)	參考BS EN 14582: 2016 · 以離子層析儀分析。 (With reference to BS EN 14582: 2016, analysis was performed by IC.)	mg/kg	50	n.d.

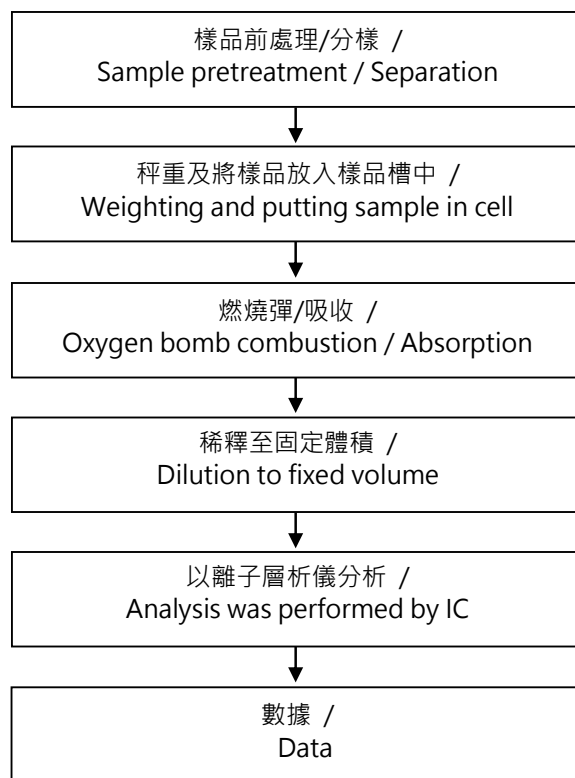
備註(Note) :

1. mg/kg = ppm ; 0.1wt% = 0.1% = 1000ppm
2. MDL = Method Detection Limit (方法偵測極限值)
3. n.d. = Not Detected (未檢出) ; 小於MDL / Less than MDL

中華紙漿股份有限公司 (CHUNG HWA PULP CORPORATION)

台北市中正區重慶南路二段51號12樓 (12F., NO. 51, SEC. 2, CHUNGCHING S. RD., ZHONGZHENG DISTRICT, TAIPEI CITY 100, TAIWAN, R. O. C.)

鹵素分析流程圖 / Analytical flow chart - Halogen



This document is issued by the Company subject to its General Conditions of Service printed overleaf, available on request or accessible at <https://www.sgs.com.tw/terms-of-service> and, for electronic format documents, subject to Terms and Conditions for Electronic Documents at <https://www.sgs.com.tw/terms-of-service>. Attention is drawn to the limitation of liability, indemnification and jurisdiction issues defined therein. Any holder of this document is advised that information contained hereon reflects the Company's findings at the time of its intervention only and within the limits of client's instruction, if any. The Company's sole responsibility is to its Client and this document does not exonerate parties to a transaction from exercising all their rights and obligations under the transaction documents. This document cannot be reproduced, except in full, without prior written approval of the Company. Any unauthorized alteration, forgery or falsification of the content or appearance of this document is unlawful and offenders may be prosecuted to the fullest extent of the law. Unless otherwise stated the results shown in this test report refer only to the sample(s) tested.

測試報告

Test Report

號碼(No.): ETR24404120

日期(Date): 26-Apr-2024

頁數(Page): 4 of 4

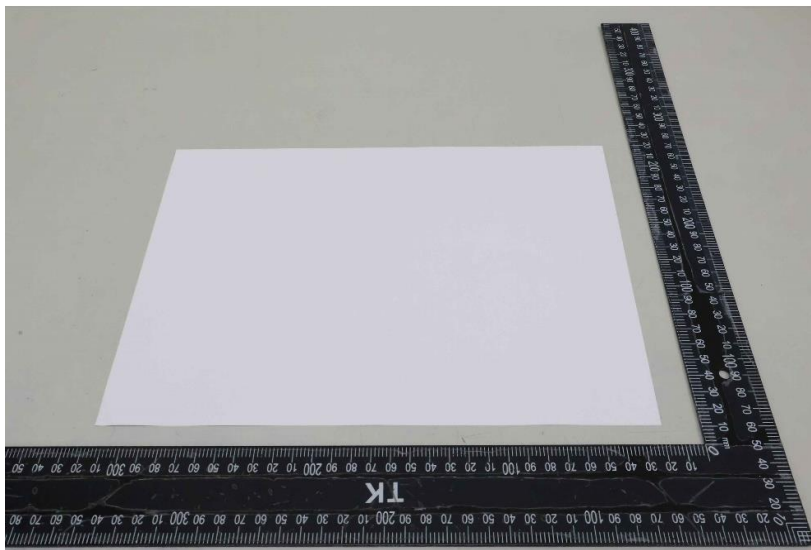
中華紙漿股份有限公司 (CHUNG HWA PULP CORPORATION)

台北市中正區重慶南路二段51號12樓 (12F., NO. 51, SEC. 2, CHUNGCHING S. RD., ZHONGZHENG DISTRICT, TAIPEI CITY 100, TAIWAN, R. O. C.)

* 照片中如有箭頭標示，則表示為實際檢測之樣品/部位。*

(The tested sample / part is marked by an arrow if it's shown on the photo.)

ETR24404120



** 報告結尾 (End of Report) **

This document is issued by the Company subject to its General Conditions of Service printed overleaf, available on request or accessible at <https://www.sgs.com.tw/terms-of-service> and, for electronic format documents, subject to Terms and Conditions for Electronic Documents at <https://www.sgs.com.tw/terms-of-service>. Attention is drawn to the limitation of liability, indemnification and jurisdiction issues defined therein. Any holder of this document is advised that information contained hereon reflects the Company's findings at the time of its intervention only and within the limits of client's instruction, if any. The Company's sole responsibility is to its Client and this document does not exonerate parties to a transaction from exercising all their rights and obligations under the transaction documents. This document cannot be reproduced, except in full, without prior written approval of the Company. Any unauthorized alteration, forgery or falsification of the content or appearance of this document is unlawful and offenders may be prosecuted to the fullest extent of the law. Unless otherwise stated the results shown in this test report refer only to the sample(s) tested.